

How to Set Up N1MM

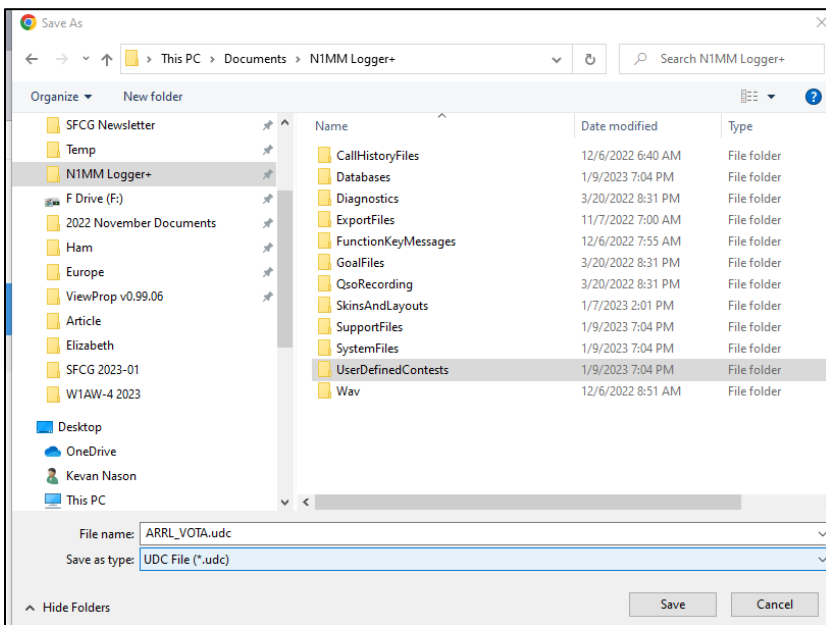
For W1AW/4 VOTA Operation

Download the User Defined Contest for W1AW/4 by:

Navigate to https://n1mmwp.hamdocs.com/mmfiles/arrl_vota-udc/ and click on Download.

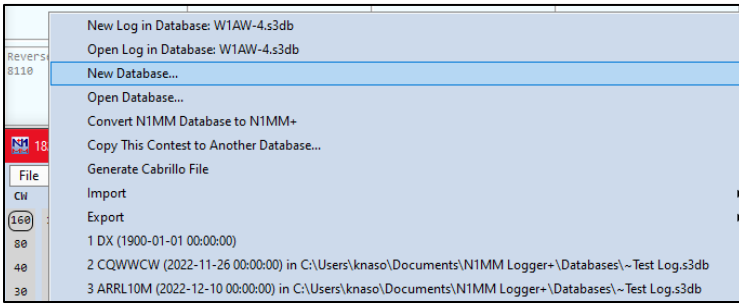


Save the UDC to Documents>N1MM Logger+>UserDefinedContests

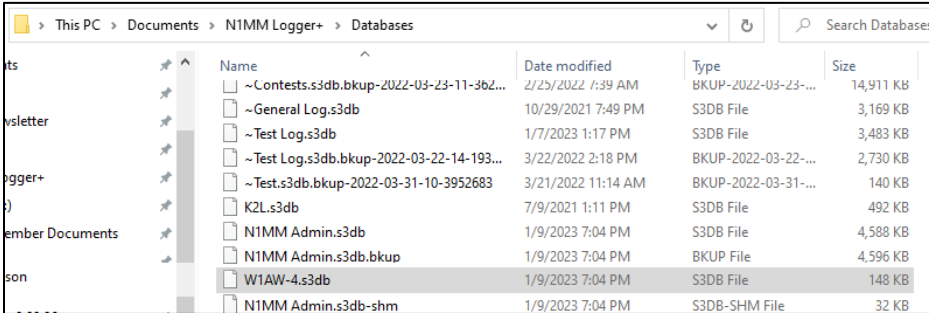


Start N1MM Software

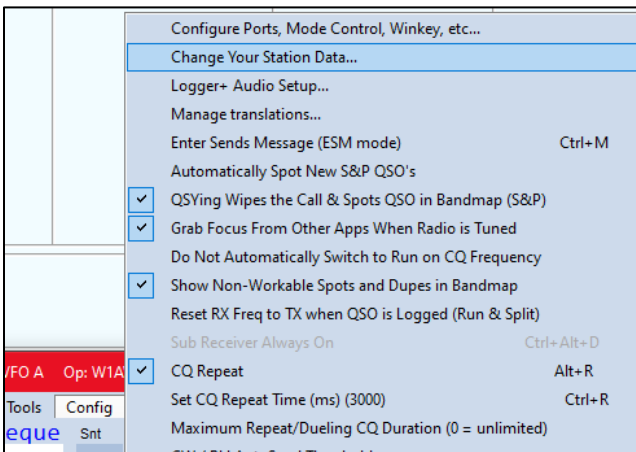
Create New W1AW-4 Database by: Select File>New Database



Name the new database W1AW-4 and Save



Select Config>Select Change Your Station Data



Enter W1AW/4 in the Call Box. Ensure YOUR Grid Square, Zones, and Section are entered. That information is used by the ARRL. My information is shown below. Your Zones and Section will be the same, but Grid Square may be different. Select OK to Save.

Select File>New Log in Database

Select ARRL_VOTA ARRL Volunteers On The Air

Log Type	CQ Worldwide CW
ALLASIAICW	All Asian DX contest CW
ALLASIASB	All Asian DX contest SSB
APSCW	Asia Pacific Sprint CW
APSSB	Asia Pacific Sprint SSB
ARCI	ARCI QRP Contest
ARIDX	ARI DX INT
ARRL_VOTA	ARRL Volunteers On The Air
ARRL10GHZ	ARRL 10 GHZ & Up (August/September)
ARRL10M	ARRL 10 Meter Contest
ARRL160	ARRL 160 Meter Contest
ARRL-222	ARRL 222 MHz & Up Distance Contest
ARRLDXCW	ARRL DX CW
ARRLDXSSB	ARRL DX SSB

Select Appropriate Information for Your Activation

Total number of contacts in database 0

Contest Associated Files

Category Show Setup Show Rules 0 Contacts

Operator SINGLE-OP State for Log Type QSOPARTY

Band ALL Note - the program does not validate categories. Check the contest rules for valid categories.

Power LOW

Mode SSB+CW

Overlay N/A

Station FIXED

Assisted ASSISTED Time Category 24-HOURS

Transmitter ONE

Sent Exchange Omit RST. E.g. CQWW: 05 SS: A 56 EMA

Operators N4XL Update Ops from Log

Soapbox

OK Help Cancel

Select the Associated Files Tab. Change the Messages to your W1AW/4 message files and Select OK to Save.

NOTE: Digital messages have not been assigned in the example below. The reason for two instances of W1AW/4 in the example below is because I have placed the message files I use for this event in a subfolder. The first W1AW-4 shown is telling N1MM to look for the associated W1AW-4 message file in the W1AW-4 subfolder. If you did not place your message files in a subfolder you will not see that type of format.

Total number of contacts in database 3

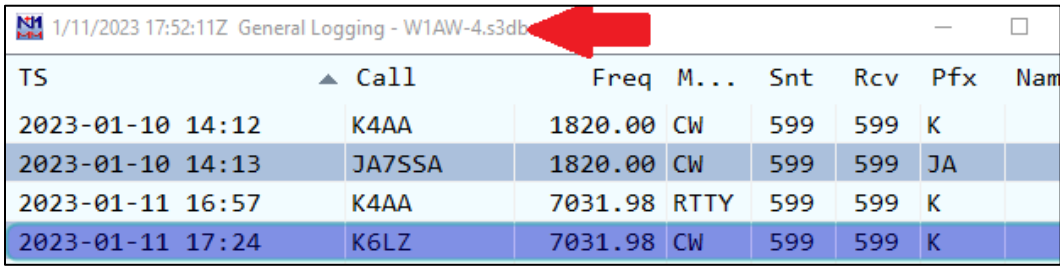
Contest Associated Files

Sample Function Keys

CW Function Key Filename	W1AW-4W1AW-4 CW.mc	Change
SSB Function Key Filename	W1AW-4W1AW-4 SSB.mc	Change
Digital Function Key Filename	Digi Default Messages.mc	Change
Master.scp Filename	master.scp	Change Default
Call History Filename	DX.txt	Change Clear
Goal Filename		Change Clear

OK Help Cancel

Screen shows W1AW/4 in Log Window



TS	Call	Freq	M...	Snt	Rcv	Pfx	Name
2023-01-10 14:12	K4AA	1820.00	CW	599	599	K	
2023-01-10 14:13	JA7SSA	1820.00	CW	599	599	JA	
2023-01-11 16:57	K4AA	7031.98	RTTY	599	599	K	
2023-01-11 17:24	K6LZ	7031.98	CW	599	599	K	

Using the Entry Window.

- Pressing the space bar, using tab, or (when using ESM) pressing Enter will move the cursor to the Name and then Comment Fields. Those fields do NOT have to be filled in to log the contact.

See example message file on next page.

Sample CW Message File. Modify as desired or make your own. The file I will be using is on the next page.

NOTE: Message files must have F1 through F12 listed in the file for the message to correspond with the correct Fkey. I use the "-" symbol to visually tell when a particular Fkey do not have a message tied to it. {Wipe} quickly erases information from the Entry Window fields if a contact is not completed. It also returns the cursor to the beginning of the Call Sign field in preparation for the next contact. Some may want to remove "W1AW/4" from F3 and manually decide when to identify. The coding needed to send "TU" three times and then automatically use "TU W1AW/4" on the fourth is at the bottom.

#RUN ----- Run Messages begin here -----

F1 CQ,cq vota W1AW/4 W1AW/4

F2 Exch,5NN SC

F3 Tu,Tu W1AW/4

F4 W1AW/4,W1AW/4

F5 His Call,!

F6 -,

F7 CALL?,cl?

F8 Agn?,agn?

F9 RR,rr

F10 Call?,cl?

F11-,

F12 Wipe,{WIPE}

#S&P ----- Search and Pounce Messages begin here -----

F1 Qrl?,qrl?

F2 Exch,5NN SC

F3 Tu,tu

F4 W1AW/4,W1AW/4

F5 His Call,!

F6 -,

F7 -,

F8 Agn?,agn?

F9 RR,rr

F10 Call?,cl?

F11 -,

F12 Wipe,{WIPE}

Have N1MM send "TU" three times and automatically change to "TU W1AW/4" on the fourth.

F3 TU,{VARYMSG1&TU&TU W1AW/4&4&}

CW Fkey message file used by N4XL. Initially anticipated that simplex operation will be used so the file is set up for that. Fkey messages for split were built into the file for rapid switching from simplex to split. If pileup so large I need to transmit up 1 KHz, then an Fkey messages with “#” in front will be used instead. Changes are made by simply deleting the “#” symbol in front of the desired message and adding “#” to the Fkey no longer being used. I intend to use RIT instead of the VFOA/B method of split operation so that N1MM’s ability to move RIT (receive frequency) using the up/dn arrow keys can be used while running. That method keeps hands on keyboard reducing muscle strain from hours of moving hand back and forth between VFO knob and keyboard. Some Fkey lines use {CLEARRIT} and others don’t because I will sometimes be split and other times not. I won’t want to {CLEARRIT} if I am working a pileup 1 or 2 KHz up from my transmit freq. I built in an extra CQ and TU simplex message without {CLEARRIT} in case for some unknown reason in the heat of battle I discover I wished I had them to choose from. Ask if have questions about other features.

#####

RUN Messages

#####

F1 CQ,CQ VOTA W1AW/4 W1AW/4{CLEARRIT}

#F1 CQ,CQ VOTA W1AW/4 W1AW/4 >>UP~1<<

#F1 CQ,CQ VOTA W1AW/4 W1AW/4

F2 EXCH,5NN SC

F3 TU,{VARYMSG1&TU&TU W1AW/4&4&}{CLEARRIT}

#F3 TU,{VARYMSG1&TU&TU W1AW/4 >>up~1<<&4&}

#F3 TU,{VARYMSG1&TU&TU W1AW/4&4&}

F4 W1AW/4,W1AW/4

F5 HIS,!

F6 -,

F7 CALL?,CL~CL?

F8 ?,?

F9 RR,RR

F10 SC,SC SC

F11 UP 1,>>Up~1<<

F12 Wipe,{WIPE}{CLEARRIT}

#F12 Wipe,{Wipe}

#####

S&P Messages

#####

F1 QRL?,QRL?{CLEARRIT}

F2 EXCH,5NN SC

F3 TU,TU{CLEARRIT}

F4 W1AW/4,W1AW/4

F5 HIS,!

F6 -,

F7 CALL?,CL~CL?

F8 ?,?

F9 RR,RR

F10 -,

F11 -,

F12 Wipe,{WIPE}{CLEARRIT}